



### *39 Thirtynine*

# Multilevel Side Table

#### Take Things to the next level

The Multilevel Side Table provides playfulness and tangibility, highlighting the architectural character of the furniture piece. Discover the next-level table. Make room for the Multilevel Side Table.

The base is made from seamless connected metal legs in different metal finishes and “table tops” in with

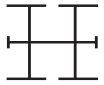
three different diameters and heights defining the function of each level.

Focus is on the metal trim cutting the surface of table top and appearing flushed with top surface.

Side table is available in three heights, which determines sizes of “table tops”.

#### Dimension. Shapes. Sizes.

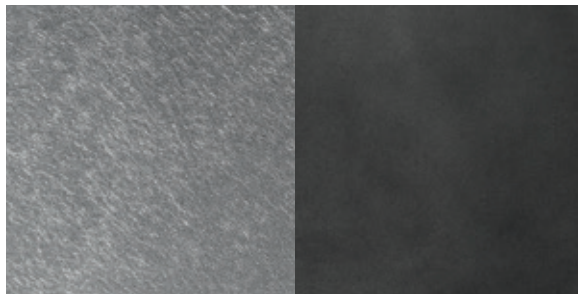
H=520mm. Tops DIA 240mm - 146mm - 184 mm  
H=660mm. Tops DIA 240mm - 146mm - 184 mm  
H=1120mm. Tops DIA 440mm - 266mm - 340 mm



Color and material scheme was carefully developed by our Designers and Master craftsmen, so finishes can't be mixed between "The Dark Matter" and "The Light Matter"

## *The Dark Matter:*

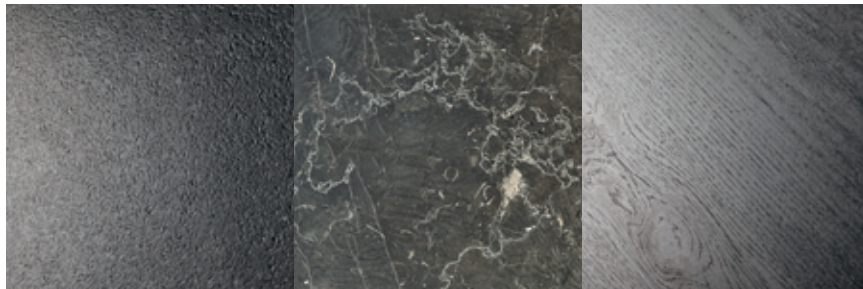
Construction / Base



semi-matte nickel

powder coated effect  
with aged shades

Table Top



Exclusive Black  
Canadian Granite  
stone

Nobel Basque marble

Croatian Oak from  
Slavonia forest, tinted  
to worn effect

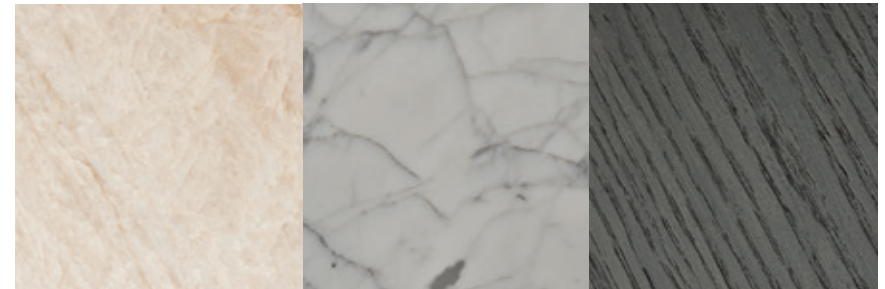
## *The Light Matter:*

Construction / Base



antique brass

Table Top



sophisticated Brazilian  
quartzite stone

Evengreen Italian  
marble

Croatian Oak from  
Slavonia forest, with  
carefully selected  
structures